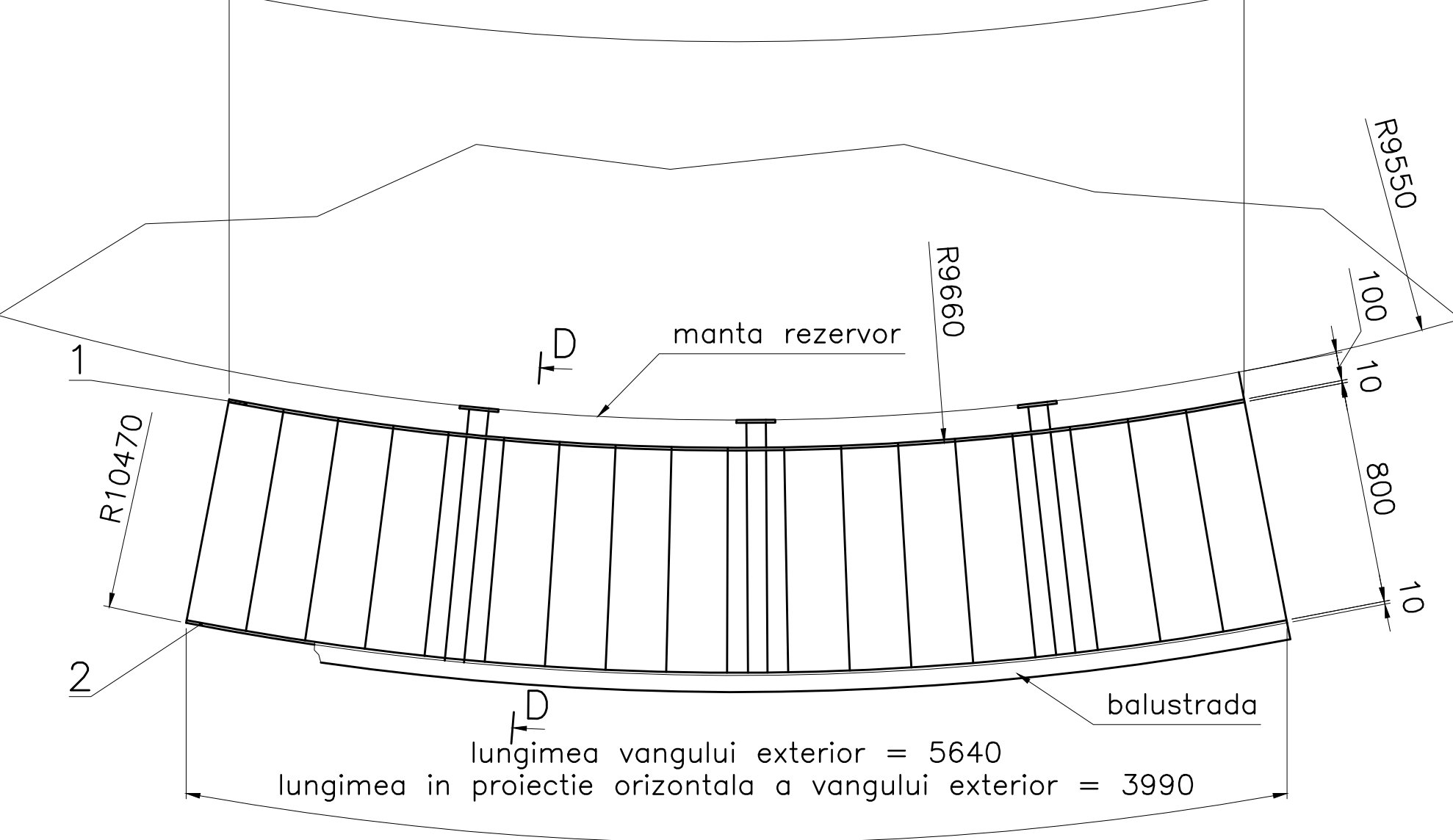
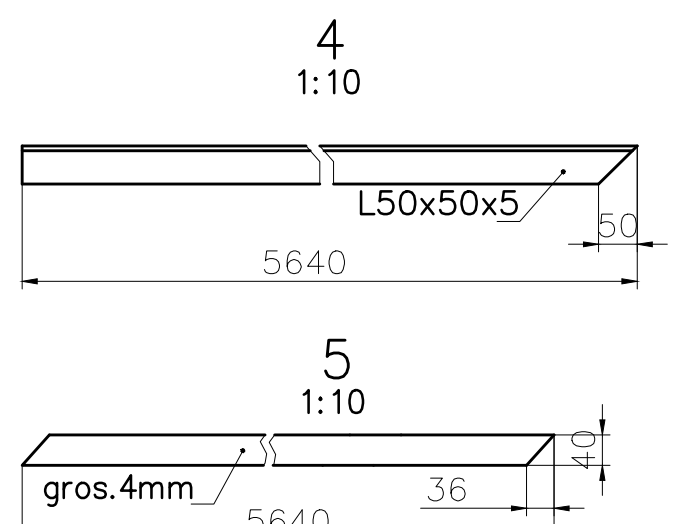
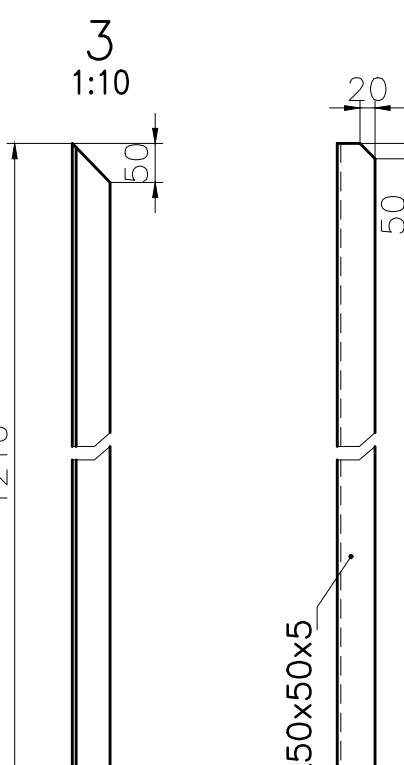
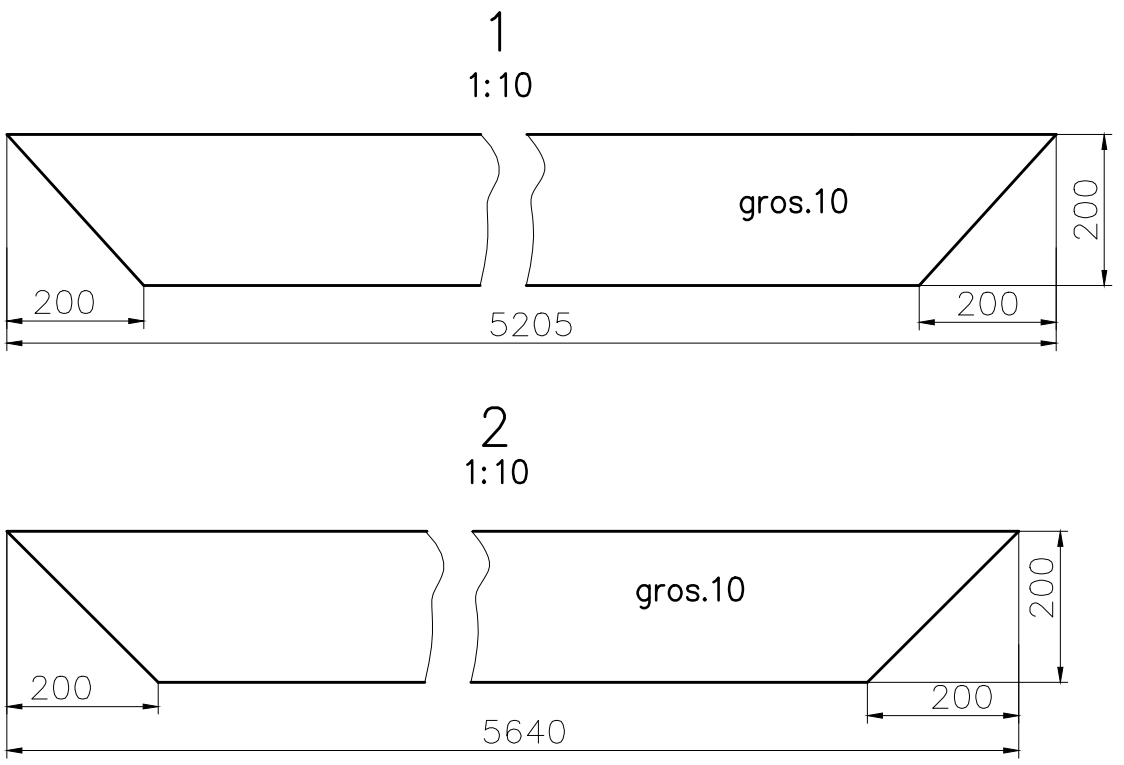


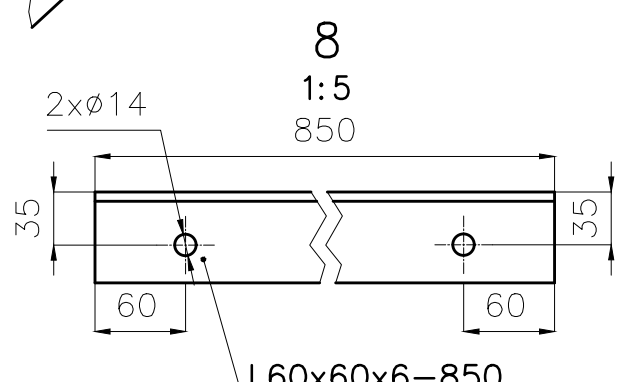
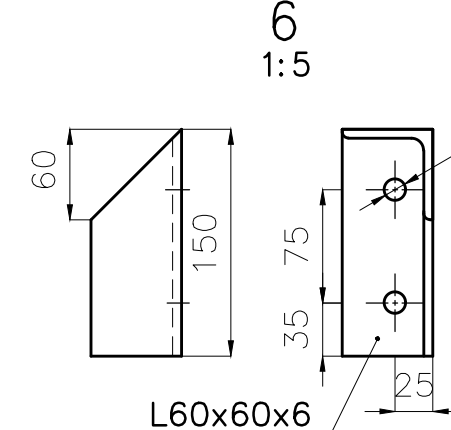
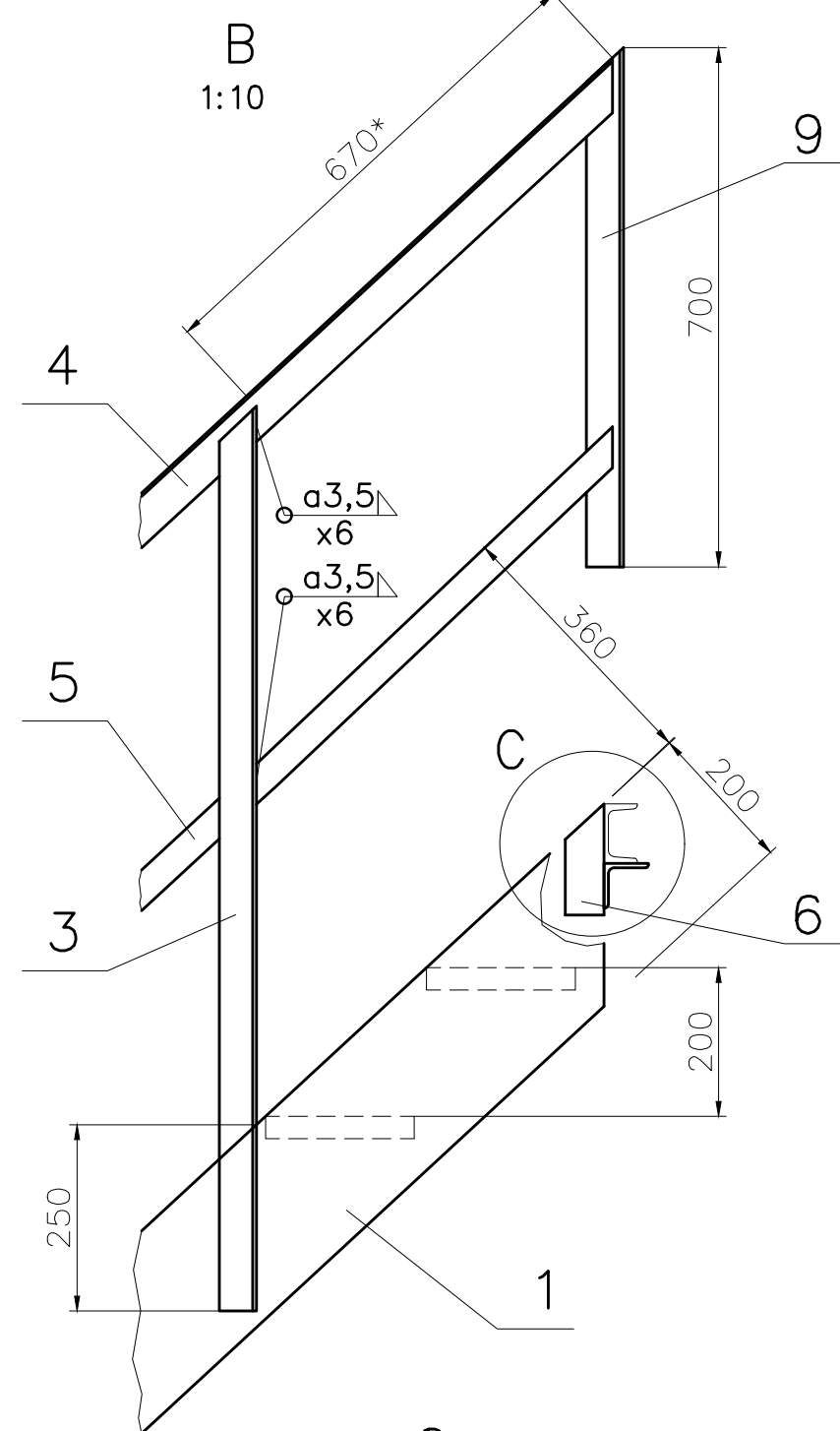
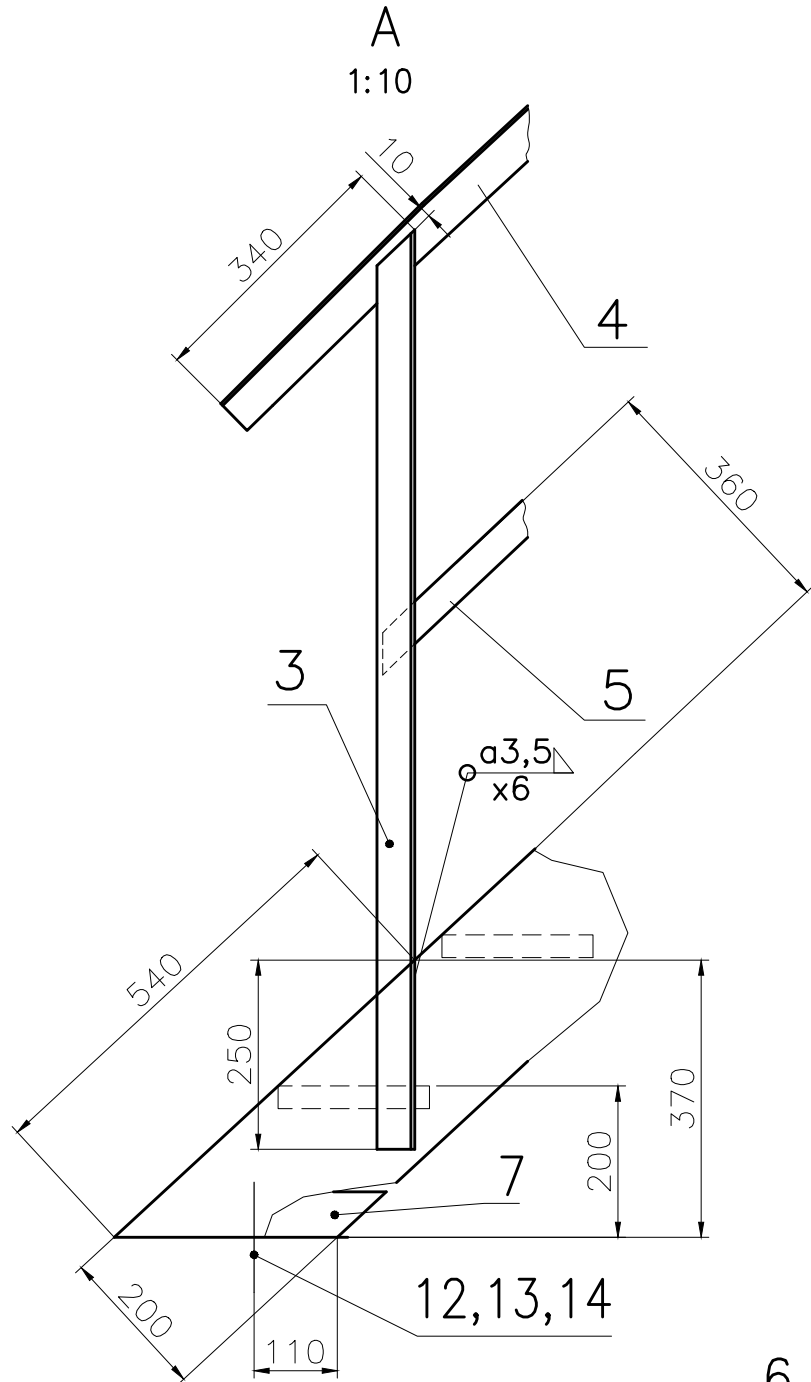
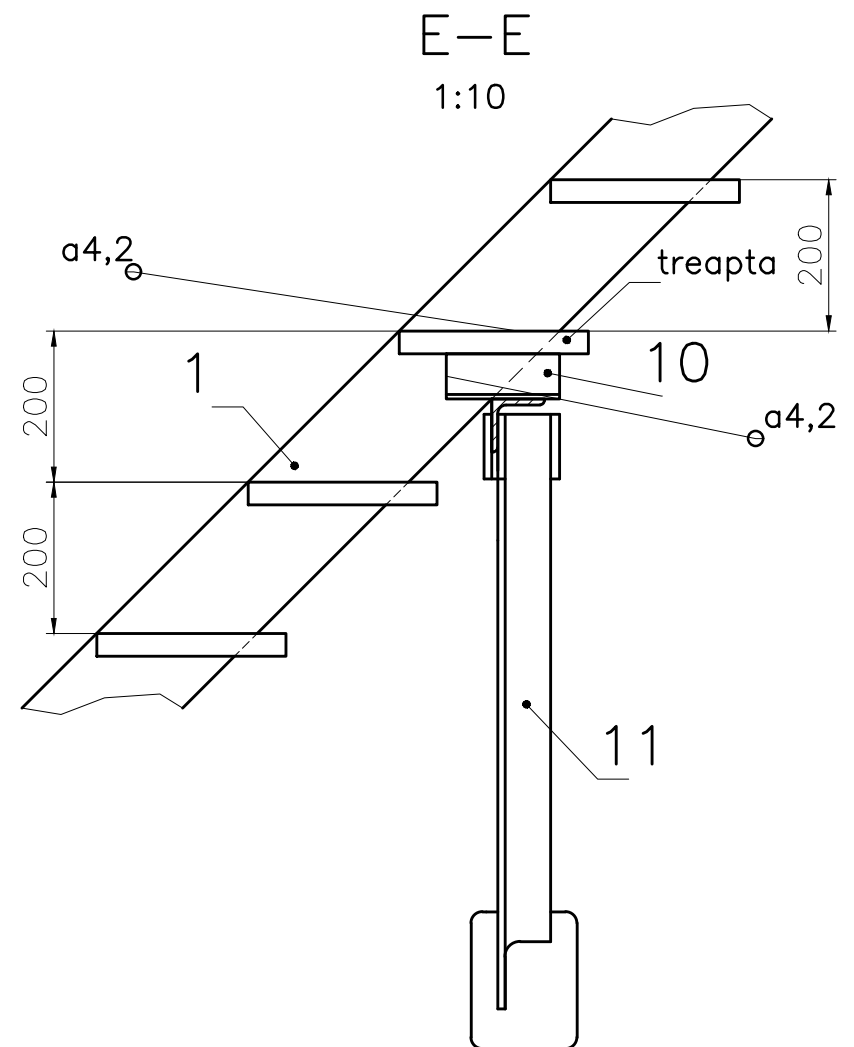
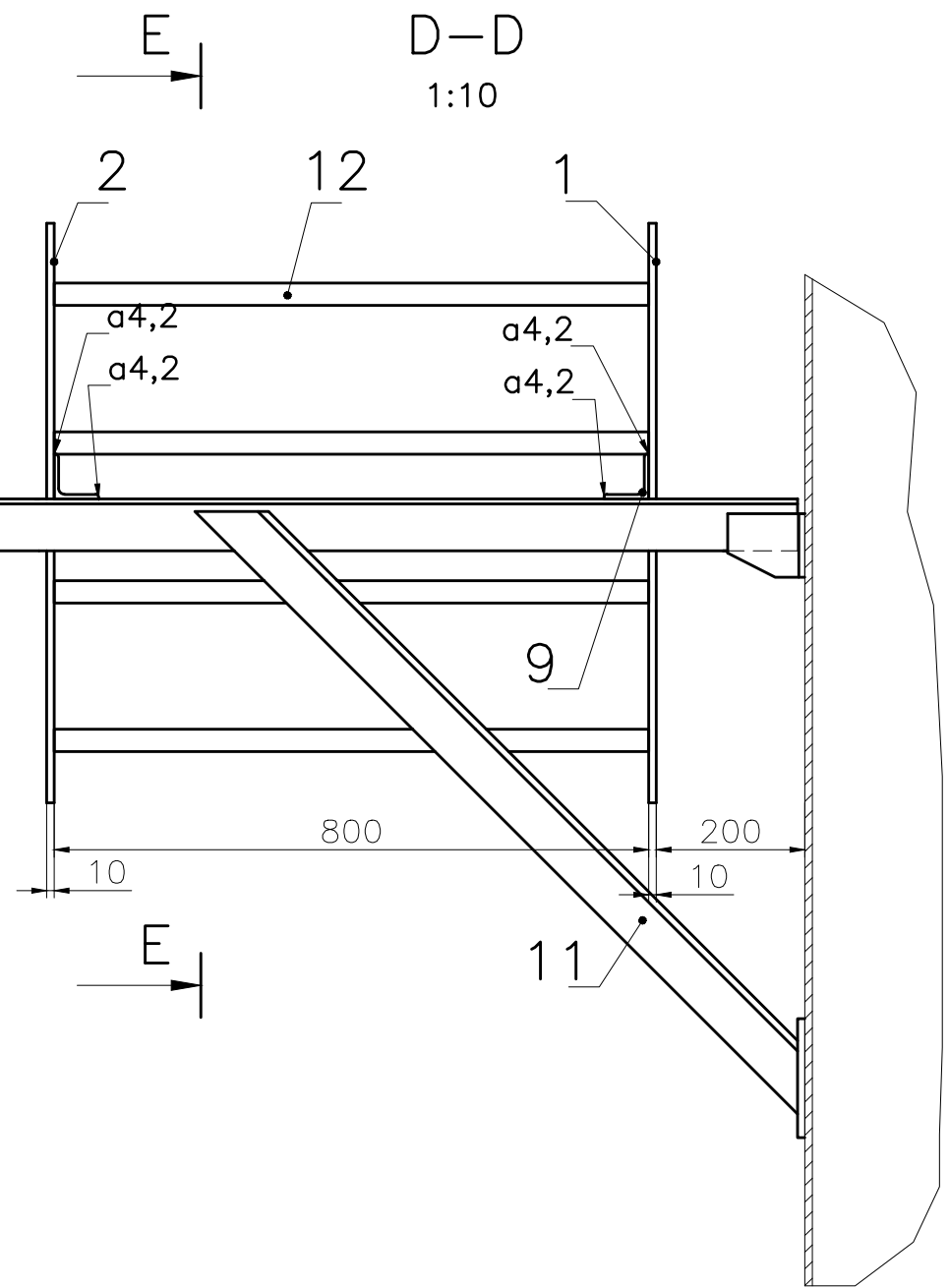
lungimea vangelui exterior = 5205  
lungimea in proiectie orizontala a vangelui exterior = 3675



lungimea vangelui exterior = 5640  
lungimea in proiectie orizontala a vangelui exterior = 3990



Platbanda 30x3=> 4Kg/treapta  
Platbanda 20x2=> 2,3Kg/treapta



15	Saiba A16		6		0.005
14	Piulita M12	SR EN ISO 4033:2013	6	gr.5	0.015
13	Surub M12x35		6	gr.5.6	0.044
12	Treapta L=800mm	Inaltime platbanda: 30 mm Grosime platbanda: 3 mm	18	SREN ISO 1461 GRATARE ZINCATE	8
11	Consola scara	A656U-03.04	4	S235J2	24,24
10	Element prindere	SR EN 10025-2:2004	6	S235J2	L60x60x6-150 0,7
9	Element prindere	SR EN 10025-2:2004	1	S235J2	L50x50x5-700 2,64
8	Element prindere	SR EN 10025-2:2004	1	S235J2	L60x60x6-850 4,61
7	Element prindere	SR EN 10025-2:2004	2	S235J2	L60x60x6-270 1,42
6	Element prindere	SR EN 10025-2:2004	2	S235J2	L60x60x6-150 0,8
5	Aparatoare	SR EN 10025-2:2004	1	S235J2	40x4-8000 7,10
4	Mina curenta	SR EN 10025-2:2004	1	S235J2	L50x50x5-5640 21.26
3	Montant	SR EN 10025-2:2004	6	S235J2	L50x50x5-1210 4,56
2	Vang interior	SR EN 10025-2:2004	1	S235J2	200x10-5640 88,55
1	Vang exterior	SR EN 10025-2:2004	1	S235J2	200x10-5205 81,72
	Electrozi	SR EN ISO 2560:2010			15
Poz.	DENUMIREA	Nr.DESEN sau STAS	BUC.	MATERIAL	OBS.
3			6		
2			5		
1			4		
Rev.	Descriere	Data	Semnat	Rev.	Descriere
Acest document este proprietatea S.C. ELLIS'92 S.R.L. si nu va fi comunicat fara autorizare					
Intocmit	Verificat	Aprobat	Beneficiar	Denumire proiect	
S.B.	N.R.	A.I.	COMPET SA	CONSTRUCTIE REZERVOR NOU PENTRU TITE (V=2500 mc) STATIA DE POMPARE BLED TMS	
92 ELLIS		SCARA ELICOIDALA TRONSON 2		Nr.: A656U-03.03 Scara: 1:100 Index: A656U-BD	
Material:		Masa: 498 kg		Data: 06.2019	Plansa: 1/1

ACEST DOCUMENT ESTE PROPRIETATEA SOCIETATII ELLIS'92 S.R.L. IN CONSECUTA, FIRMA ARE DREPTUL EXCLUSIV DE FOLGARE A DESENULUI SAU DE OPERARE A EVENTUALELOR MODIFICARI DIN CAMPUL ACESTUIA.